

## Cell Applications, Inc. advantage:



- High purity and low passage
- Rigorous quality control
- Cell sets from the same donor
- Cells from different species
- Validated for 3D tissue model
- Maximum flexibility
- Custom services
- Ready-to-use Total Kits

## >100 published studies on:

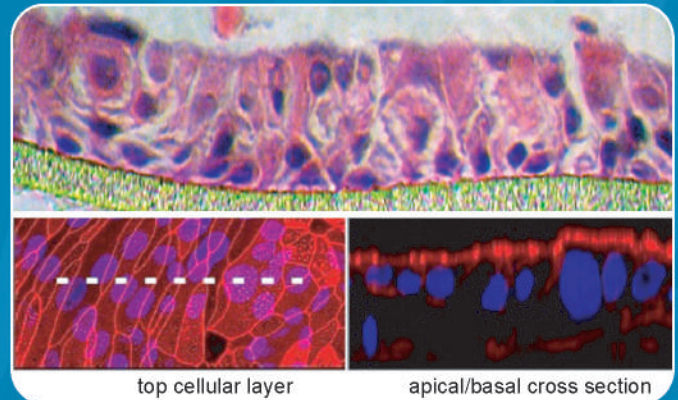
- Cardiovascular function and disease
- Effects of environmental pollution
- Oxidative stress and inflammation
- Endothelial physiology
- Pulmonary function and pathophysiology
- Molecular mechanisms of lung tissue repair
- Viral infection and its consequences
- Cancerogenesis
- 3D tissue engineering & drug discovery

## Primary Airway Cells

- Bronchial Epithelial Cells (H)
- Tracheal Epithelial Cells (H)
- Pulmonary Artery Endothelial Cells (H, B, P)
- Lung Microvascular Endothelial Cells (H)
- Pulmonary Artery Smooth Muscle Cells (H, B, Cn, P, R)
- Lung Fibroblasts (H, R)

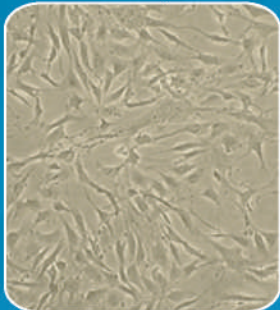
EC: Endothelial Cells  
 EpC: Epithelial Cells  
 SMC: Smooth Muscle Cells  
 H: Human, B: Bovine  
 Cn: Canine, P: Porcine, R: Rat

## 3D Airway model system

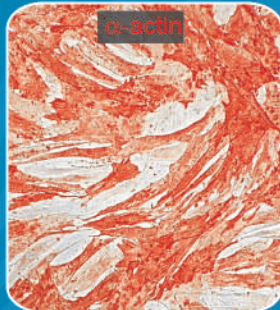


When grown on inserts and provided with the liquid/air interface, Human Bronchial Epithelial Cells (HBEpC) can differentiate into a pseudostratified epithelium and serve as a more physiological 3D tissue model for in vitro studies. Top panel: tissue slice. Bottom panel: confocal micrographs; cells are labeled for actin (red) and nuclei (blue).

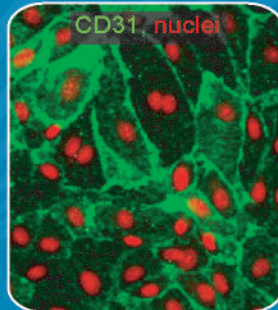
Pulmonary SMC



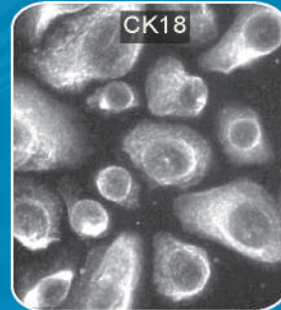
Pulmonary SMC



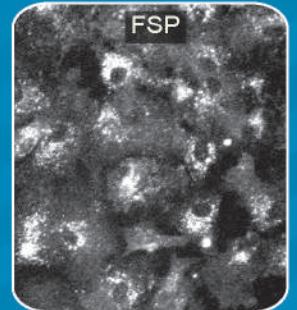
Lung Microvascular EC



Bronchial EpC



Lung Fibroblasts



**ORDER TODAY!**

www.cellapplications.com • 800-645-0848 • orders@cellapplications.com • 5820 Oberlin Dr., #101, San Diego, CA 92121

